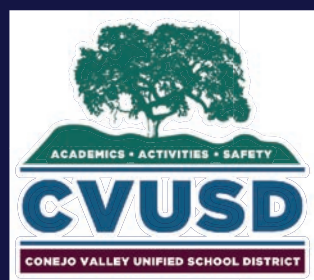




CVUSD | *Facilities Master Plan*

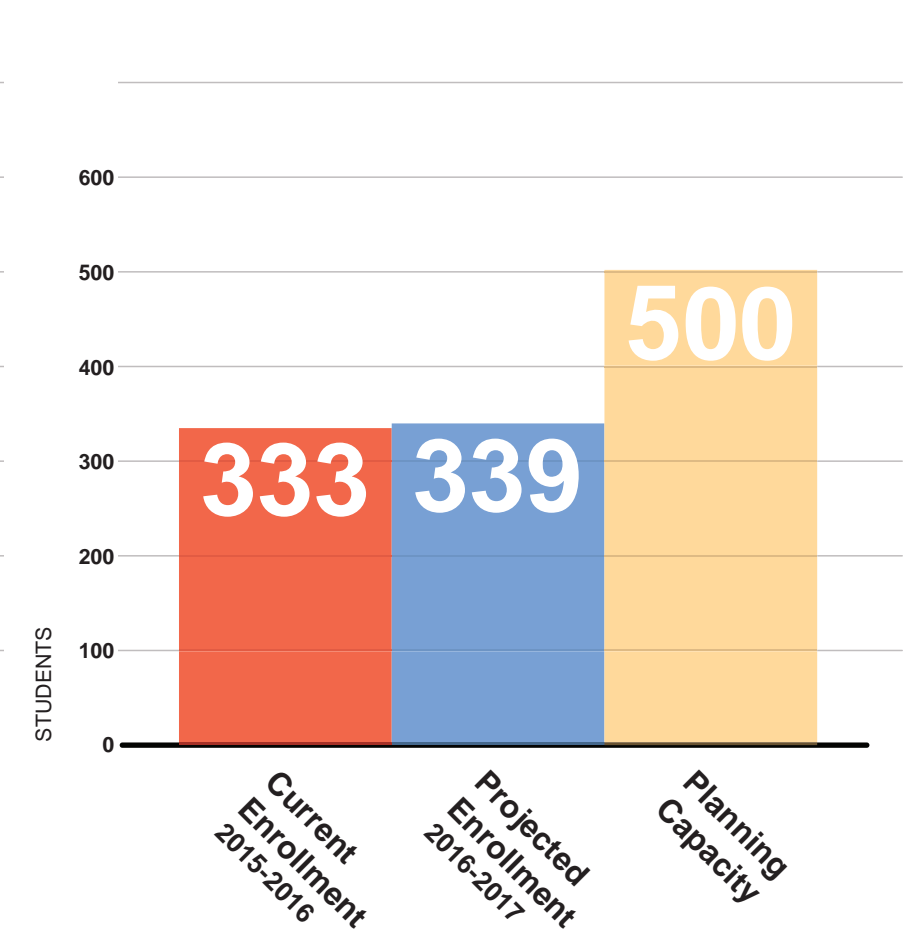
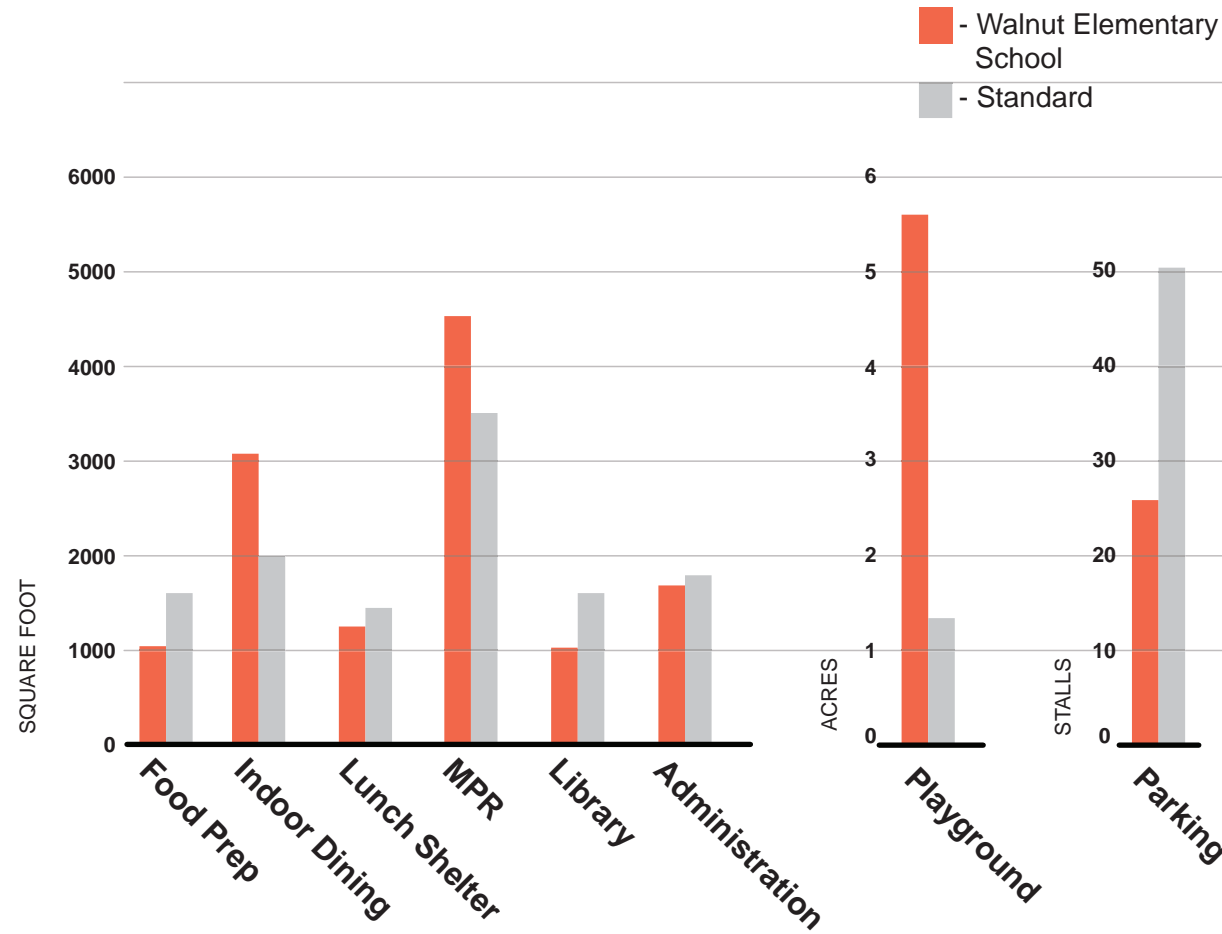
CVUSD - NEWBURY PARK CLUSTER



Walnut Elementary | *Alternate Concepts*

581 Dena Drive | Newbury Park, CA 91320
Conejo Valley Unified School District
April 5, 2017

NAC Architecture
837 North Spring Street, 3rd Floor
Los Angeles, CA 90012
Contact: 323.475.8075
E-mail: lochoa@nacarchitecture.com
Website: www.nacarchitecture.com



Challenges Summary:

- Covered connection between most buildings but not all
- Insufficient shade for play areas and outdoor dining
- Typical Accessibility challenges
- Discrepant, aged and inefficient windows

Core Facilities Summary

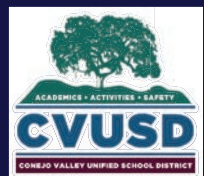
Current facilities meet school's needs

Current facilities DO NOT meet school's needs

- Indoor Dining (+1,035 SF)
- Multi-Purpose Room (+1,029 SF)
- Playground (+ 4.31 Acres)
- Food Prep (-533 SF)
- Library (-630 SF)
- Parking (-27 Stalls)
- Lunch Shelter (-180 SF)
- Administration (-46 SF)

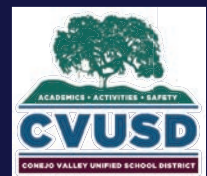
Enrollment Summary

Total Current Classrooms: 22
 Total Based on Projected Enrollment Classrooms: 16



LEGEND

- Existing Building (No Work)
- New Construction
- High Modernization
- Medium Modernization
- Low Modernization
- Structure Above
- x Building Number
- "P" Indicates Portable
- x Indicates Uncertified



Walnut Elementary | Alternate Concepts

581 Dena Drive, Newbury Park, CA 91320
 Conejo Valley Unified School District
 April 5, 2017

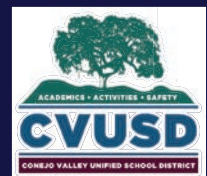
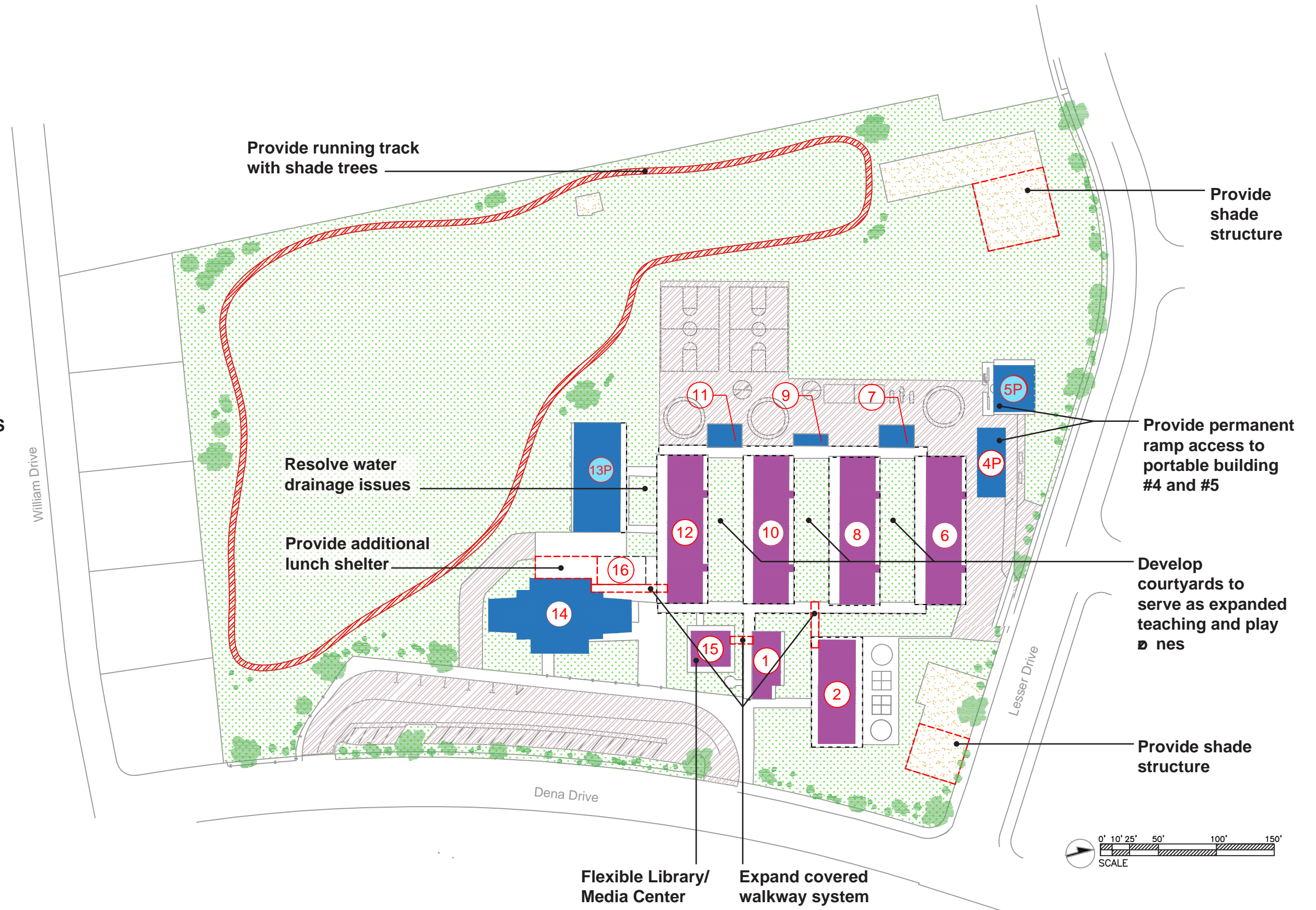
Existing Conditions

LEGEND

- Existing Building (No Work)
- New Construction
- High Modernization
- Medium Modernization
- Low Modernization
- Structure Above
- x Building Number
- "P" Indicates Portable
- x Indicates Uncertified

CAMPUS-WIDE IMPROVEMENTS

- New Fencing, shade trees and landscaping along campus perimeter
- Reconcile non-compliant accessibility conditions



Walnut Elementary | Alternate Concepts

581 Dena Drive, Newbury Park, CA 91320
 Conejo Valley Unified School District
 April 5, 2017

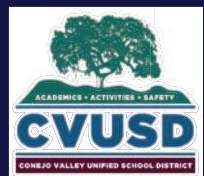
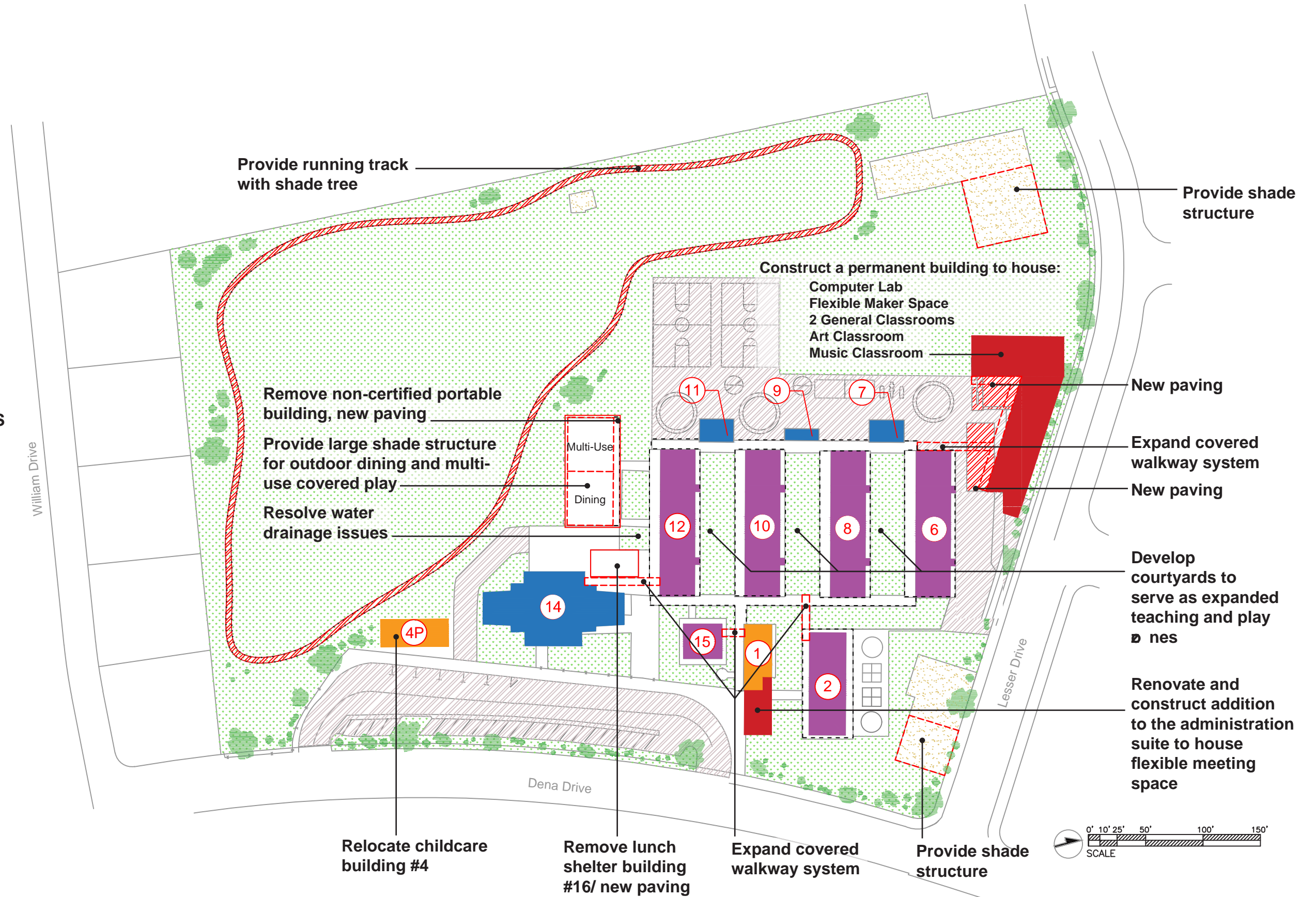
Alternate Concept 1

LEGEND

- Existing Building (No Work)
- New Construction
- High Modernization
- Medium Modernization
- Low Modernization
- Structure Above
- x Building Number
- P Indicates Portable
- x Indicates Uncertified

CAMPUS-WIDE IMPROVEMENTS

- New Fencing, shade trees and landscaping along campus perimeter
- Reconcile non-compliant accessibility conditions



Walnut Elementary | Alternate Concepts

581 Dena Drive, Newbury Park, CA 91320
 Conejo Valley Unified School District
 April 5, 2017

Alternate Concept 2



Alternate Concept 1

Project Scope:

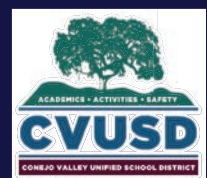
- New Fencing, shade trees and landscaping along campus perimeter
- Medium modernization to most buildings including new windows, HVAC improvements, exterior aesthetic improvements
- Renovate Library to provide flexible use as library and Media Center
- Reconcile non-compliant accessibility conditions
- Develop courtyards to serve as expanded teaching and play zone
- Resolve Drainage issues
- Provide running track with shade trees
- Add shade structure at playground area



Alternate Concept 2

Project Scope:

- New Fencing, shade trees and landscaping along campus perimeter
- Medium modernization to most buildings including new windows, HVAC improvements, exterior aesthetic improvements
- Renovate Library to provide flexible use as library and Media Center
- Develop courtyards to serve as expanded teaching and play zone
- Resolve Drainage issues
- Provide running track with shade trees
- Add Shade Structure at playground area
- Remove buildings #5, #13, and lunch shelter, Relocate childcare building #4
- Renovate and construct addition to the administration suite to house flexible meeting space
- Construct a permanent building to house, Computer Lab, Flexible maker space, 2 general classrooms, Art Classroom, and Music classroom
- Provide large shade structure for outdoor dining and multi-use covered play



Walnut Elementary | *Alternate Concepts*

581 Dena Drive, Newbury Park, CA 91320
 Conejo Valley Unified School District
 April 5, 2017

Summary