



CVUSD
TECHNOLOGY SERVICES

Conejo Valley Unified School District

Technology Catalog

2024-2025



Version 24.01

(Last Update: 11/13/2023)

TABLE OF CONTENTS

Technology Philosophy.....	3
Technology Committee.....	4
Measure I.....	5
Measure I Timelines.....	6
Desktop Computers.....	7
Laptop Computers.....	8
iPads.....	9
Charging Cabinets.....	10
Accessories.....	11-13
Televisions.....	14
Interactive Panels.....	15
Laser Projectors.....	16
Lamp Projectors.....	17
Single Function Printers.....	18
Multi-Function Printers.....	19
Instructional Technology.....	20-21
Connection Accessories.....	22

Conejo Valley Unified School District

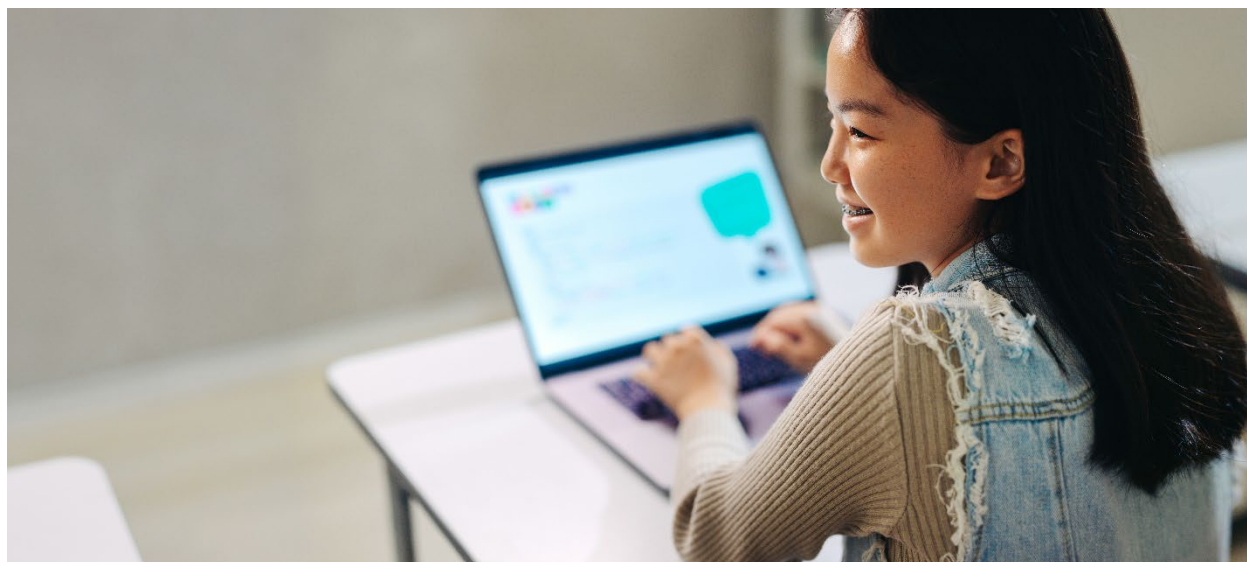
Technology Philosophy

The Conejo Valley Unified School District strives to support all learners to be college and career ready. The responsible use of technology will empower students to maximize their full potential, as well as prepare them for their future. Technology shall be seamlessly integrated throughout the instructional program.

The Conejo Valley Unified School District shall provide access to a wide range of technology resources for staff and student use. Access to technology means that the teachers and students can utilize technology to collaborate, communicate, create, and support critical thinking whenever necessary. The District shall provide professional learning opportunities for teachers and staff.

The Conejo Valley Unified School District shall support technology through planned and measured means, including the establishment and maintenance of goals incorporated into the Local Control Accountability Plan supported by a thoughtful budget to ensure long term sustainability. This includes utilizing technology to provide communication and targeted outreach that informs the community of programs and opportunities that support positive student outcomes. The district shall maintain the bandwidth to support the school community.

The Conejo Valley Unified School District shall implement a process to evaluate pedagogy to ensure teachers and students have the ability to introduce new resources in order to keep pace with an ever-changing technology environment. The district shall work within its means to implement and support new resources within budgetary and staffing constraints.



CVUSD Technology Committee

2024-2025

The goal of the CVUSD Technology Committee is to promote the strategic and efficient use of technology, both hardware and software, to support student learning.

The CVUSD Technology Committee is charged with creating the strategic technology plan and curriculum for the District. Our mission is to promote the use of technology, to increase operations efficiency while supporting instructional services and student learning.

The responsibilities of the Committee include:

- Working with Technology Services to ensure secure computer and internet access to all students while systematically supporting, upgrading, or replacing technology solutions to meet District needs.
- Supporting the success of students through the development of instructional technologies
- Coordinate and assist with technology strategic planning efforts across the District
- Review services provided by Technology Services and make recommendations for adding, changing and removing solutions
- Review and make recommendations on new and revised policies across technology services for the District.

The Technology Committee, made up of a cross section of faculty, staff and students, meets to discuss and evaluate all matters related to technology at the Conejo Valley Unified School District.

Henry Ortiz, Director Technology Services

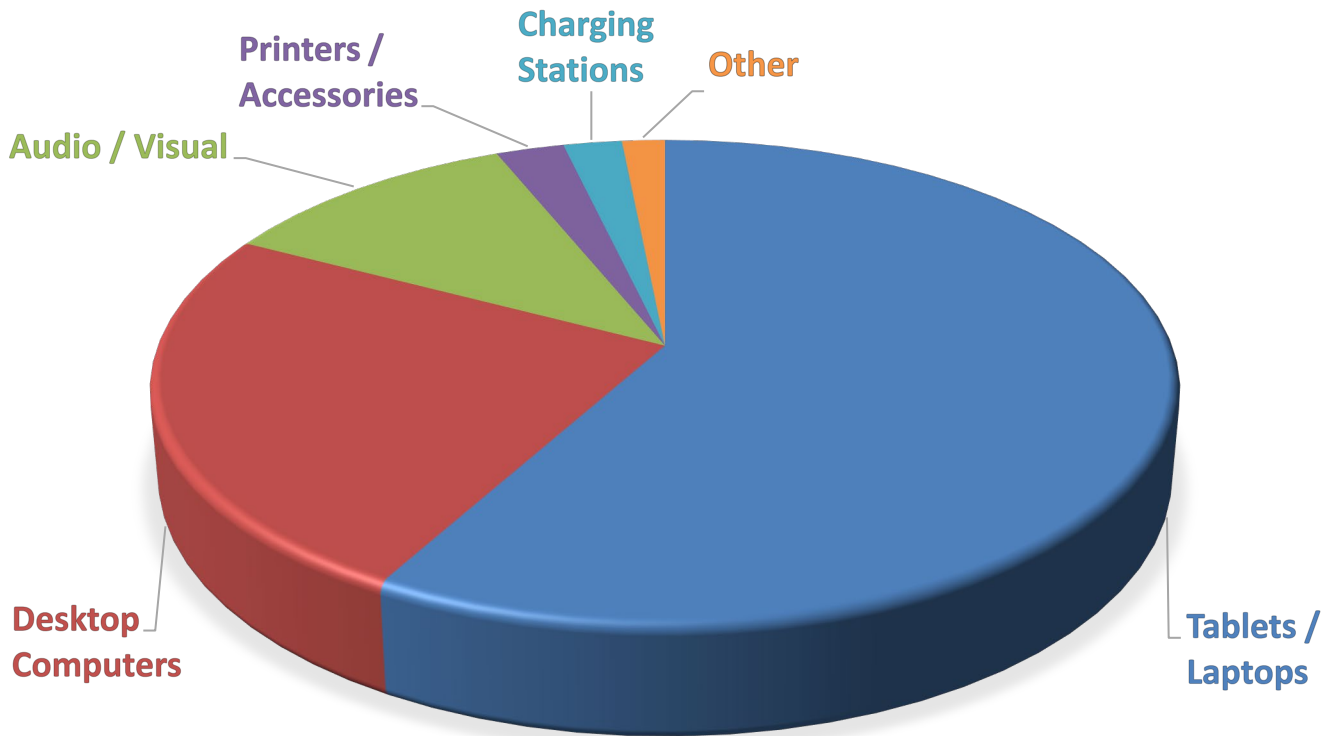
Jayna Suter – Assistant Director, Educational Technology & Student Performance





Measure I

Since 2015, Conejo Valley Unified School District has spent **\$13,490,021** on technology purchases with funding from Measure I. The device purchases are categorized below:



Tablets/Laptops	\$7,569,205
Desktop Computers	\$3,271,640
Audio/Visual	\$1,721,380
Printers/Accessories	\$399,344
Charging Stations	\$270,624

Other* \$257,828

Installation Services	\$78,843
Science Equipment	\$42,346
Accessories	\$75,417
Miscellaneous	\$30,629
Electrical Engineering	\$10,151
Gen/Civil Engineering	\$8,546
Robotics	\$7,784
Software	\$4,112

MEASURE I TIMELINES

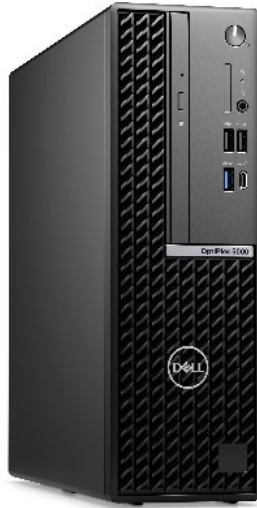
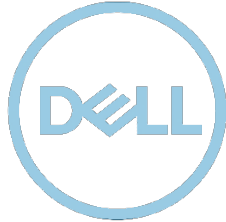
Principals, Administrators and Site Technicians should refer to the dates in the attached timeline for appropriate expectations for the ordering process and device distributions for the remainder of the school year.

Office Manager Training	October 23 – October 27, 2023
Technology Catalog Distribution	November 13, 2023
Ordering Window Opens	
<u>Ordering Window Closes</u>	March 1, 2024
Installations and Deployments	May - August 2024

The Measure I Order Form will be sent to all school site administrators and site technicians at the time that the catalog is released. Upon receiving the Order Form, Principals should work with their Site Technicians, and send a finished copy to oseman@conejousd.org. Order Forms provide a live cart balance tool to assist with planning Measure I Allocation expenditures. *All Measure I order forms **MUST** be reviewed by the school's assigned Site Technician prior to submission to ensure that the appropriate installations and accessories have also been purchased.*

For any questions pertaining to the Measure I Order Forms, Technology Catalog, or timelines for ordering this school year, please contact Oscar Seman, Technology Services Administrative Assistant via phone or email at oseman@conejousd.org or (805) 498-4557 ext. 7562.

DESKTOP COMPUTERS



Dell OptiPlex 7010 i5 Small Form Factor

\$939

- CDW-G ITEM # 7449880
- 13th Generation Intel Core i5-13400 Proc (6+4 Cores, 20 MB Cache, 16 Threads, up to 4.60 GHz)
- Integrated Intel UHD Graphics 730 (Two DisplayPort 1.4a Ports)
- Optional HDMI 2.1b port
- 16GB, 1 x 16GB DDR4 Non-ECC Memory
- M.2 256GB PCIe NVMe Class 35 SSD
- No Optical Drive
- Intel AX210 WiFi 6e 2x2 AX + Bluetooth 5.2
- 3Y ProSupport NBD On-site

Expected Lifespan: **6 years**
Windows 11 Compatible: **Yes**

Dell OptiPlex 7010 i7 Small Form Factor

\$1,035

- CDW-G ITEM # 7457915
- 13th Generation Intel Core i7-13700 Proc (8+8 Cores, 30 MB Cache, 24 Threads, up to 5.10 GHz)
- Integrated Intel UHD Graphics 770 (Two DisplayPort 1.4a Ports)
- Optional HDMI 2.1 port
- 16GB, 1 x 16GB DDR5 Non-ECC Memory
- M.2 512GB PCIe NVMe Class 35 SSD
- No Optical Drive
- Intel AX211 WiFi 6e 2x2 AX + Bluetooth 5.2
- 3Y ProSupport NBD On-site

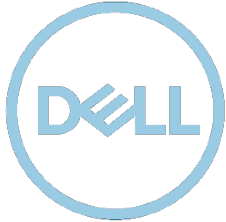
Expected Lifespan: **6 years**
Windows 11 Compatible: **Yes**

Additional configurations available. Please contact Oscar Seman, oseman@conejousd.org, for pricing and availability

Optional Add-Ons:

- Dell 24 Monitor P2422H 23.8" Monitor + **\$209** CDW-G ITEM # 7284603
- PC Speakers (Logitech Z200) + **\$43** CDW-G ITEM # 3190941
- Dell USB Slim DVD+/-RW DW316 Drive + **\$32** CDW-G ITEM # 7284617
- Wireless Keyboard & Mouse (Logitech MK270) + **\$27** CDW-G ITEM # 3006282
- Wireless Keyboard & Mouse (Logitech MK540, Universal USB Dongle) + **\$48** CDW-G ITEM # 4984684

LAPTOPS



Dell Latitude i5 7440

(Non-Touchscreen) **\$1,135**

CDW-G ITEM # 7428343

(Touchscreen) **\$1,243**

CDW-G ITEM # 7710854

- 13th Generation Intel Intel Core i5-1345U Proc (10 Core, 12 MB Cache, 12 Threads, up to 4.40 GHz)
- Integrated Intel Iris Xe Graphics with Thunderbolt
- 14.0" FHD (1920x1080) Display (Anti Glare, **Non-Touch**, IPS, 250 nits)
- 16GB, 2 x 8GB LPDDR5 Non-ECC Memory (4800 MT/s)
- M.2 256GB PCIe NVMe Class 35 SSD
- Mini LED Backlit Keyboard, US English
- 1080p at 30 fps, widescreen FHD camera, with built-in camera shutter and Temporal Noise Reduction for high image quality
- 3Y ProSupport NBD On-site

Expected Life Span: **6 years**
Windows 11 Compatible: **Yes**

Dell Latitude i7 7440

(Non-Touchscreen) **\$1,447**

CDW-G ITEM # 7428346

(Touchscreen) **\$1,554**

CDW-G ITEM # 7711032

- 13th Generation Intel vPro Enterprise with Intel Core i7-1355U Processor (10 Core, 12 MB Cache, 12 Threads, up to 5.00 GHz)
- Integrated Intel Iris Xe Graphics with Thunderbolt
- 14.0" FHD (1920x1080) Display (Anti Glare, **Non-Touch**, WVA, 250 nits)
- 16GB, 2 x 8GB LPDDR5 Non-ECC Memory (4800 MT/s)
- M.2 512GB PCIe NVMe Class 35 SSD
- Mini LED Backlit Keyboard, US English
- 1080p at 30 fps, widescreen FHD camera, with built-in camera shutter and Temporal Noise Reduction for high image quality
- 3Y ProSupport NBD On-site

Expected Life Span: **6 years**
Windows 11 Compatible: **Yes**

Optional Add-Ons:

- Dell Thunderbolt 4 Docking Station (Recommended) + **\$193** CDW-G ITEM # 7284604
- Dell 24 P2422H 23.8" Monitor + **\$209** CDW-G ITEM # 7284603
- PC Speakers (Logitech Z200) + **\$43** CDW-G ITEM # 3190941

iPADS



Apple iPad 10th Generation (10 Pack)

\$4,480

- APPLE ITEM # MPQT3LL/A
- A14 Bionic chip with 64-bit architecture
- 10.9" (diagonal) LED backlit multi-touch display with IPS Technology
- 12MP camera, F/2.4 aperture, and five-element Lens
- 64GB SSD
- Up to 10 hours run time
- **1st Gen Apple Pencil supported**

Apple iPad Mini 6 (10 Pack)

\$4,802

- APPLE ITEM # MKD13LL/A
- A15 Bionic chip with 64-bit architecture
- 8.3" (diagonal) LED backlit multi-touch display with IPS Technology
- 12MP camera, F/2.4 aperture, and five-element Lens
- 64GB SSD
- Up to 20 hours run time
- **2nd Gen Apple Pencil supported**



Optional Add-Ons:

- *1st Generation Apple Pencil* + **\$95**
- *2nd Generation Apple Pencil* + **\$128**
- **NEW** Apple Pencil (USB-C) + **\$74**
- *3 Year AppleCare (10 Pack)* + **\$790**

iPad Cases:

- *MaxCase Extreme Shield for iPad (10 Pack)* + **\$268**
- *MaxCase Extreme Shield for Mini (10 Pack)* + **\$247**

CHARGING CABINETS

For Chromebooks, Tablets or Laptops



AC 12-Bay Charging Cabinet

\$649

- CDW-G ITEM # 3957333
- Charges and stores up to 12 devices.
- Features retracting doors with adjustable device divider bay to allow fitment of any width device ranging 9 to 17 inches.

Warranty: Limited Lifetime

Life Span: 15 Years



AC 16-Bay Charging Cabinet

\$756

- CDW-G ITEM # 4195214
- Charges and stores up to 16 devices.
- Features retracting doors with adjustable device divider bay to allow fitment of any width device ranging 9 to 17 inches.

Warranty: Limited Lifetime

Life Span: 15 Years

ACCESSORIES



Logitech HD Webcam C920e

\$63

CDW-G ITEM # 6383651

- 78° field of view
- Camera mega pixel: 3
- Focus type: **Autofocus**
- Lens type: Glass
- Built-in mic: Stereo
- Mic range: Up to 3 ft (1 m)

Warranty: 2 Year

Logitech HD Webcam C930e

\$106

CDW-G ITEM # 2976700

- 90° field of view
- Camera mega pixel: 3
- Focus type: **Autofocus**
- Lens type: Glass
- Built-in mic: stereo, dual omni-directional
- Mic range: Up to 3 ft (1 m)
- Digital zoom: 4x

Warranty: 2 Year

HoverCam Duo Doc Cam

\$456

CDW-G ITEM # 6335835

- 12MP Camera
- 1080P full motion video
- 16x motorized Zoom
- Built-in LED lamp
- Includes software
- **USB output only. Requires computer connection**
- **Will not work as a standalone document camera**

Warranty: 2 Year
Life Span: 8 Years

Airtame 2

\$477

CDW-G ITEM # 5303942

Micro USB Ethernet Adapter **(Required)**

\$29

CDW-G ITEM # 4140725

- Share from any device
- Share securely, with PIN code connect
- No shared content leaves the network
- Supports digital signage (new)
- **Required for wireless streaming**

ACCESSORIES



FrontRow Juno Tower Bundle

\$1,448

CDW-G ITEM # 5759136

- Bluetooth tower
- Pendant Microphone
- Teacher Software License
- USB Cable and 2 Audio Cables
- Volume level controllable via voice command
- Simultaneous 5 microphone recording and relay
- Features patented OptiVoice technology to emphasize speech sounds.

Life Span: 8 Years
Warranty: 2 Year

Lumens DC193

\$563

CDW-G ITEM # 4422854

- 30 fps 1080p HD Video
- USB 2.0 output
- VGA input/output
- HDMI input/output
- Built-in LED lamp
- Source toggle button

Warranty: 2 Year
Life Span: 8 Years

Logitech Zone Learn Over Ear Wired Headset

\$34

CDW-G ITEM # 7400616

- Padded polyurethane leatherette over-ear pads and headband comfort layer
- Micro-articulating ear cups and adjustable slider arms
- Rigid, stowable boom mic with 120° rotation
- Omni-directional pickup with gasket & noise suppressing filter
- 4.3' cable length with easy-assist plug-in and cable clip for storage
- 3.5 mm AUX cable

TWT Audio REVO TW300 Over Ear Headset

\$32

CDW-G ITEM # 7225939

- Ergonomically Sleek Structure
- 24mm Thick Seamless Ear Cushions
- Innovative And Durable Structuring
- Acoustically Tuned And Ported Ear Cups
- 3.5 mm TRS cable

ACCESSORIES



<p><u>Pebble v3 USB-C Speakers</u></p> <p>\$45</p> <p>CDW-G ITEM #6600254</p> <p>Audio System Max Output Power: 16 watt</p> <p>Audio System Nominal Output Power (Total): 8 watt</p> <p>Audio System Type: Speakers</p> <p>Connectivity Technology: Wired, Wireless</p> <p>Designed For: For PC</p> <p>Enclosure Design: Passive radiator</p> <p>Frequency Response: 100 - 17000 hertz</p> <p>Interface Type: USB</p> <p>Signal-To-Noise Ratio: 75 decibel</p> <p>System Components: 2 speakers</p>	<p><u>Wired Mouse</u></p> <p>\$8</p> <p>CDW-G ITEM # 2086051</p> <p>Sensor Technology: Optical tracking</p> <p>Number of Buttons: 3 (Left/Right-click, Middle click)</p> <p>Scrolling: line-by-line</p> <p>Scroll Wheel: Yes, optical</p>	<p><u>Wireless Keyboard/Mouse Set</u></p> <p>\$27</p> <p>CDW-G ITEM #3006282</p> <p>Keyboard</p> <ul style="list-style-type: none">• Adjustable keyboard height• 10-Key Number pad• Caps lock indicator light• Num lock indicator light <p>Mouse</p> <p>Sensor Technology: Optical tracking</p> <p>Number of Buttons: 3 (Left/Right-click, Middle click)</p> <p>Scrolling: line-by-line</p> <p>Scroll Wheel: Yes, optical</p>	<p><u>Wired Keyboard/Mouse Set</u></p> <p>\$16</p> <p>CDW-G ITEM #2124292</p> <p>Keyboard</p> <ul style="list-style-type: none">• Adjustable keyboard height• 10-Key Number pad• Caps lock indicator light• Num lock indicator light <p>Mouse</p> <p>Sensor Technology: Optical tracking</p> <p>Number of Buttons: 3 (Left/Right-click, Middle click)</p> <p>Scrolling: line-by-line</p> <p>Scroll Wheel: Yes, optical</p>
---	---	--	---

TELEVISIONS

Tech Services
Recommended



ViewSonic 4K UHD Display*

75" Screen = \$1,776

CDW-G ITEM # 7176455

86" Screen = \$2,634

CDW-G ITEM # 7176465

- Premium Large Format Presentation Display
- Ultra HD (3840 x 2160) Resolution
- 450 cd/m2 of Brightness
- Powerful All-in-One SoC Platform
- Integrated Content Management System
- 40 Watt audio output
- One VGA port and four HDMI port capabilities
- **Recommended for front of class use or 24/7 Operation**

Warranty: 3 years

Life Span: 10 Years



Samsung BET-H Pro TV

50" Screen = \$451

CDW-G ITEM # 7390562

70" Screen = \$794

CDW-G ITEM # 7390579

85" Screen = \$1,561

CDW-G ITEM # 7390583

- 4K UHD (3840 x 2160) Native Resolution
- HDR10 & HDR10+ Compatibility
- 8 ms Response Time
- 250 cd/m² Brightness
- 4700:1 Typical Contrast Ratio
- USB, 2 x HDMI Inputs

Warranty: 3 years

Life Span: 7 Years

Installation Services:

- *New Installation (no equipment/electrical currently installed): \$1,385*
- *Replacement Installation/New Installation not requiring electrical: \$885*
- *Site Technician consultation required prior to order submission*

Optional Add-Ons:

- *Airtame 2 (Required for wireless streaming) + \$477 +29 CDW-G ITEMS # 5303942 & # 4140725*
- *Peerless Tilt Wall Mount (up to 75") + \$97 CDW-G ITEM # 847169*
- *Peerless Tilt Wall Mount (above 75") + \$129 CDW-G ITEM # 937384*
- *Peerless Articulating Wall Mount (up to 75") + \$349 CDW-G ITEM # 2040197*
- *Peerless Articulating Wall Mount (above 75") + \$456 CDW-G ITEM # 2072357*
- *AverMedia SoundBar+ \$161 CDW-G ITEM # 6206877*

INTERACTIVE PANELS



Tech Services
Recommended

Promethean ActivPanel 9

75" Screen = \$3,216

SALE PRICE: \$2012.50

Sale ends 12/22/23

STS ITEM # AP9-A75-NA-1

86" Screen = \$4,397

STS ITEM # AP9-A86-NA-1

- Multi-touch interactive LCD panel
- Touch and pen functionality
- 1080p resolution
- 15W Speaker
- 32GB internal storage, 4GB RAM
- Pen/touch differentiation and multi-tasking Windows.
- 2HDMI and USB touch ports
- 1 USB-C port and cable

Promethean ActivPanel 9 Premium

75" Screen = \$3,539

SALE PRICE: \$2415.00

Sale ends 12/22/23

STS ITEM # AP9-B75-NA-1

86" Screen = \$4,826

STS ITEM # AP9-B86-NA-1

- Multi-touch interactive LCD panel
- Touch and pen functionality
- 3840X2160p resolution
- 15W Speaker
- 32GB internal storage, 4GB RAM
- Pen/touch differentiation and multi-tasking Windows.
- 2HDMI and USB touch ports
- 1 USB-C port and cable

Installation Services:

- *New Installation (no equipment/electrical currently installed): \$1,435*
- *Replacement Installation/New Installation not requiring electrical: \$935*
- *Site Technician consultation required prior to order submission*

Optional Add-Ons:

- *Promethean ActivPanel Fixed Mobile Stand + \$460 STS ITEM # AP-FSM*
- *Promethean ActivPanel Adjustable Mobile Stand + \$1,071 STS ITEM # AP-ASM-90*
- *Promethean Sound Bar + \$138 STS ITEM # ASB-40-2*

LASER PROJECTORS

EPSON

Tech Services
Recommended



Epson PowerLite UST 805F Projector

\$2,413

CDW-G ITEM # 6184417

- 5,000 Lumens of Color and White Brightness
- 20,000-hour Laser Light Engine with no Lamps
- Built-in Edge Blending and Split Screen Features
- Full HD 1080p Resolution
- Project Up to 130"
- HDMI Connections
- Three HDMI ports, one VGA port
- **Recommended for front of class use**

Warranty: 3 years

Life Span: 10 Years

Epson L630U Laser Projector

\$2,869

CDW-G ITEM # 6558949

- Up to 6,200 lumens of equal Color and White Brightness
- 20,000-hour laser light source
- Built-in tools for simplified installation
- Full HD WUXGA support; accepts 4K signal
- Display from 50" to 500" diagonal (16:10) or ultra wide (16:6)
- Two HDMI ports, one VGA port
- **Recommended for Multi-Purpose Rooms**

Warranty: 3 years

Life Span: 10 Years

Installation Services:

- *New In- Ceiling Installation (no equipment/electrical currently installed): **\$1,580***
- *Replacement In-ceiling Installation/New Installation not requiring electrical: **\$1,080***
- *New Ultra Short Throw Installation (no equipment/electrical currently installed): **\$1,495***
- *Replacement Ultra Short Throw Installation/New Installation not requiring electrical: **\$995***
- *Site Technician consultation required prior to order submission*

Optional Add-Ons:

- *Airtame 2 (Required for wireless streaming) + **\$477 +29** CDW-G ITEMS # 5303942 & # 4140725*
- *Suspended Ceiling Mounting Plate + **\$75** CDW-G ITEM # 2284760*
- *Universal Projector Mount + **\$134** CDW-G ITEM # 3805766*
- *Ultra Short Throw Wall Mount + **\$113** CDW-G ITEM # 5801894*

LAMP PROJECTORS

EPSON



Epson PowerLite 982W

\$669

CDW-G ITEM # 6069270

- Brightness: 4200 Lumens
- Resolution: 1280x800 WXGA
- Contrast Ratio: Upto 16000:1
- Projection System: 3LCD, 3-Chip Technology
- Aspect Ratio: 16:10
- Two HDMI ports, two VGA port

Warranty: 3 years

Life Span: 5 Years



Epson PowerLite UST 685W

\$1,174

CDW-G ITEM # 4425332

- Brightness: 3500 lumens
- 3LCD projector
- Aspect Ratio: 16:10
- Ultra short-throw lens
- WXGA (1280 x 800)
- Three HDMI ports, one VGA port

Warranty: 3 years

Life Span: 5 Years

Installation Services:

- New Installation (no equipment/electrical currently installed): **\$1,580**
- Replacement Installation/New Installation not requiring electrical: **\$1,080**
- New Ultra Short Throw Installation (no equipment/electrical currently installed): **\$1,495**
- Replacement Ultra Short Throw Installation/New Installation not requiring electrical: **\$995**
- **Site Technician consultation required prior to order submission**

Optional Add-Ons:

- Airtime 2 (Required for wireless streaming) + **\$477** CDW-G ITEM # 5303942
- 980w Projector Replacement Bulb + **\$70** CDW-G ITEM # 6133812
- 685w Projector Replacement Bulb + **\$79** CDW-G ITEM # 4422944
- Suspended Ceiling Mounting Plate + **\$75** CDW-G ITEM # 2284760
- Universal Projector Mount + **\$134** CDW-G ITEM # 3805766
- Ultra Short Throw Wall Mount + **\$113** CDW-G ITEM # 5801894

SINGLE FUNCTION PRINTERS



Brother HL-L6250DW **(Black & White)**

\$338

CDW-G ITEM # 3991686

- 12,000-page cartridge included
- 520-sheet capacity paper tray
- Prints up to 48 pages per minute

Warranty: 1 year
Life Span: 8 Years

Brother HL-L9310CDW **(Color)**

\$660

CDW-G ITEM # 4540207

- 6,500-page cartridges included
- 250-sheet capacity paper tray
- Prints up to 33 pages per minute

Warranty: 3 years
Life Span: 10 Years

High Yield Toners and Cartridges:

BROTHER HL-L6250DW:

- Brother TN-850 High Yield Toner Cartridge **(8K Pages) + 70** CDW-G ITEM # 4013452
- Brother TN-880 Super High Yield Black Toner Cartridge **(12K Pages) + 91** CDW-G ITEM # 3985212

Brother HL-L9310CDW:

- Brother TN439BK Ultra High Yield Black Toner Cartridge **(9K Pages) + \$70** CDW-G ITEM # 4536125
- Brother TN439C Ultra High Yield Cyan Toner Cartridge **(9K Pages) + \$107** CDW-G ITEM # 4536127
- Brother TN439Y Ultra High Yield Yellow Toner Cartridge **(9K Pages) + \$107** CDW-G ITEM # 4536132
- Brother TN439M Ultra High Yield Magenta Toner Cartridge **(9K Pages) + \$107** CDW-G ITEM # 4536128

MULTI-FUNCTION PRINTERS



Brother MRC-L6750DW Multi-Function (Black & White)

\$681

CDW-G ITEM # 4012519

- 12,000-page cartridge included
- 520-sheet capacity paper tray
- Prints up to 48 pages per minute

Warranty: 1 year
Life Span: 8 Years



Brother MFC-L9570CDW Multi-Function (Color)

\$863

CDW-G ITEM # 4558061

- 6,500-page cartridges included
- 250-sheet capacity paper tray
- Prints up to 33 pages per minute

Warranty: 3 years
Life Span: 10 Years

High Yield Toners and Cartridges:

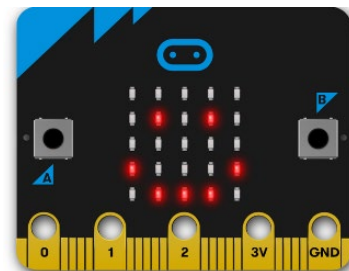
BROTHER MRC-L6750DW:

- Brother TN-850 High Yield Toner Cartridge **(8K Pages) + 70** CDW-G ITEM # 4013452
- Brother TN-880 Super High Yield Black Toner Cartridge **(12K Pages) + 91** CDW-G ITEM # 3985212

BROTHER MFC-L9570CDW:

- Brother TN439BK Ultra High Yield Black Toner Cartridge **(9K Pages) + \$70** CDW-G ITEM # 4536125
- Brother TN439C Ultra High Yield Cyan Toner Cartridge **(9K Pages) + \$107** CDW-G ITEM # 4536127
- Brother TN439Y Ultra High Yield Yellow Toner Cartridge **(9K Pages) + \$107** CDW-G ITEM # 4536132
- Brother TN439M Ultra High Yield Magenta Toner Cartridge **(9K Pages) + \$107** CDW-G ITEM # 4536128

INSTRUCTIONAL TECHNOLOGY



Wonder Workshop Dash Wonder Kit

\$290

This Bundle includes all the hardware and software you need to bring block-coding to life for kids in grades K-5! This pack includes 1 Dash robot, 1 sketch kit, 1 launcher, 1 gripping building kit, and 2 block connectors.

Deluxe Wonder 8 Pack

\$2,413

- 8 Dash Robots
- 8 Sketch Kits
- 8 Launchers
- 8 Gripper Building Kits
- 16 Building Brick Connectors

Wonder Workshop Cue Robot

\$214

The Cue robot is designed for kids who have an interest in coding. Cue will help them transition from block-based code to state-machine and text-based programming.

Micro:bit v2

\$25

Micro:bit v2 10 Pack

\$204

The BBC micro:bit is a pocket-sized computer that introduces you to how software and hardware work together. Micro:bit incorporates LED lights, sound, and sensors that allow students to interact with their programming environment. Model lessons and resources are available at no charge for teachers to use for grades 3 and up.

INSTRUCTIONAL TECHNOLOGY



Ozobot Evo Classroom Kit 12-Pack

\$2,199

Applications and lessons available for grades K to 12. Ozobots make it easy to integrate STEAM and teach coding with all subjects, including ELA, Math, etc. There is a free digital curriculum and vendor-provided lesson library available with the purchase of the Ozobot robots.

- 12 Ozobot Evo Robots
- 12 Color Code Marker Sets
- Get Started Activities
- 1 Charging Cradle & Power Cable
- 1 Bot Label Sticker Pack
- 1 Ozobot Brand Sticker Pack

Evo Classroom Kit 18-Pack

\$3,207

Osmo Genius Starter Kit for iPad (Grades 1-5)

\$74

Osmo Coding Starter Kit for iPad (Grades 1-5)

\$64

Osmo Little Genius Starter Kit for iPad (Grades TK-K)

\$59

Osmo requires the use of an iPad for each pack purchased. iPad not included in purchase price.

Qball Pro Throwable Wireless Microphone System

\$213

- LED light ring indicates whether QBall is muted or not
- All-Day Battery Life – 12+ Hours
- Quite -Toss Automatic Mute Technology
- Hush Mode
- Easy to Clean
- Battery Saver Feature
- Simplified Set up and Installation
- Charging port: USB-C

CONNECTION ACCESSORIES

HDMI Cables

3 ft **\$5** CDW-G ITEM # 2321407
6 ft **\$6** CDW-G ITEM # 755135
10 ft **\$8** CDW-G ITEM # 755137
25 ft **\$13** CDW-G ITEM # 4714621
35 ft **\$19** CDW-G ITEM #4432316
50 ft **\$86** CDW-G ITEM #5443014

DisplayPort

3 ft **\$12** CDW-G ITEM # 2287165
6 ft **\$13** CDW-G ITEM # 1561875
15 ft **\$27** CDW-G ITEM # 3367211

USB Cables

6 ft **\$3** CDW-G ITEM # 411421
10 ft **\$3** CDW-G ITEM # 411422

USB 3.0 to Ethernet

\$30 CDW-G ITEM # 3814510

USB-C to Ethernet

\$27 CDW-G ITEM # 4779189

Surge Protectors

Tripp Lite 7' Surge Protector (7 outlet) **\$24** CDW-G ITEM # 291101

Tripp Lite 15' Surge Protector (6 outlet) **\$87** CDW-G ITEM # 2914417

Tripp Lite 25' Surge Protector (7 outlet) **\$45** CDW-G ITEM # 1269585

Tripplite Active USB (ActivPanels)

16 ft **\$21** CDW-G ITEM # 646972
33 ft **\$32** CDW-G ITEM # 2798961
49 ft **\$36** CDW-G ITEM # 4442105
65 ft **\$46** CDW-G ITEM # 2562956

Ethernet Cables

3 ft **\$2** CDW-G ITEM # 324505
7 ft **\$3** CDW-G ITEM # 324506
15 ft **\$3** CDW-G ITEM # 2087084
25 ft **\$5** CDW-G ITEM # 324509

Adapters

HDMI to VGA **\$28** CDW-G ITEM # 3081733
DisplayPort to VGA **\$19** CDW-G ITEM # 2230570
DisplayPort to HDMI **\$13** CDW-G ITEM # 1690001
MiniDP to HDMI **\$13** CDW-G ITEM # 2684571
MiniDP to DisplayPort **\$8** CDW-G ITEM # 4636199
USB-C to HDMI **\$25** CDW-G ITEM # 3813119
USB-C to DisplayPort **\$27** CDW-G ITEM # 5531655
USB-C to 3.5mm **\$16** CDW-G ITEM # 5636150

Please contact Oscar Seman, oseman@conejouso.org, for any questions or comments regarding the Technology Catalog.

