

Last Updated: 5/4/2018

Table of Contents:

Minimum Requirements	2
Q Website URLs	2
Getting Help.....	2
Google Chrome	3
How to tell if you are using Google Chrome (a.k.a. "Chrome")	3
How to clear the cache in Google Chrome	4
Internet Explorer	6
How to tell if you are using Internet Explorer (a.k.a. "IE").....	6
How to clear the cache in Internet Explorer	6
Mozilla Firefox	8
How to tell if you are using Mozilla Firefox (a.k.a. "Firefox")	8
How to clear the cache in Mozilla Firefox.....	8
Microsoft Edge.....	9
How to tell if you are using Microsoft Edge.....	9
How to switch to Chrome	9

Minimum Requirements

As of February 2018, Q version 3.4:

Browser / Program	Minimum Requirements	Recommended Requirements
Internet Explorer	11.x	11.x
Mozilla Firefox	47.x	54.x
Safari	9.x	10.x
Google Chrome	54.x	59.x
Microsoft Edge	38.x	40.x
Adobe Acrobat Reader *	9.x	DC
Microsoft Excel / Word **	2007	2016
Screen Resolution	1024 x 768	1280 x 1024 or higher

* Adobe Acrobat Reader is required for reports, however the built-in Chrome PDF viewer may work also.

** Excel is required for reports that export as a spreadsheet or pivot table. Word is required for reports that export as a mail merge.

Q Website URLs

The following should be your “Bookmark” or “Favorite”:

<http://q.conejousd.org>

Do NOT save a link that includes any subdirectory such as “Q”, “Home”, “Login”, etc.

Do NOT save a link that includes a file name such as “login.aspx” or “default.htm”.

Directories and file names may change as the product evolves and may not work in the future.

Getting Help

You can always click the “Help” menu in Q for the “QWiki” help system.

There are also links on the main Q Index page to help.

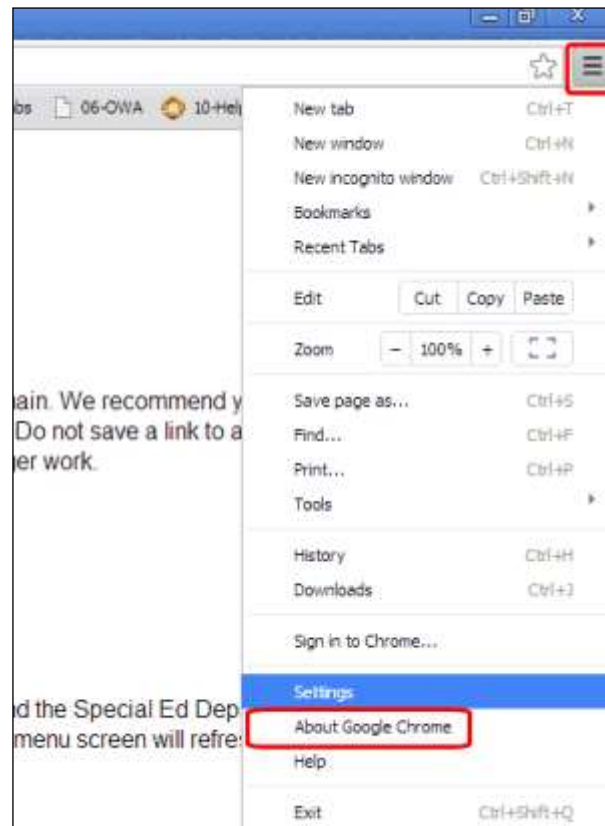
Google Chrome

How to tell if you are using Google Chrome (a.k.a. “Chrome”)

Google Chrome did away with a menu bar and now has a menu icon at the top right. Older versions of Chrome have a wrench icon.

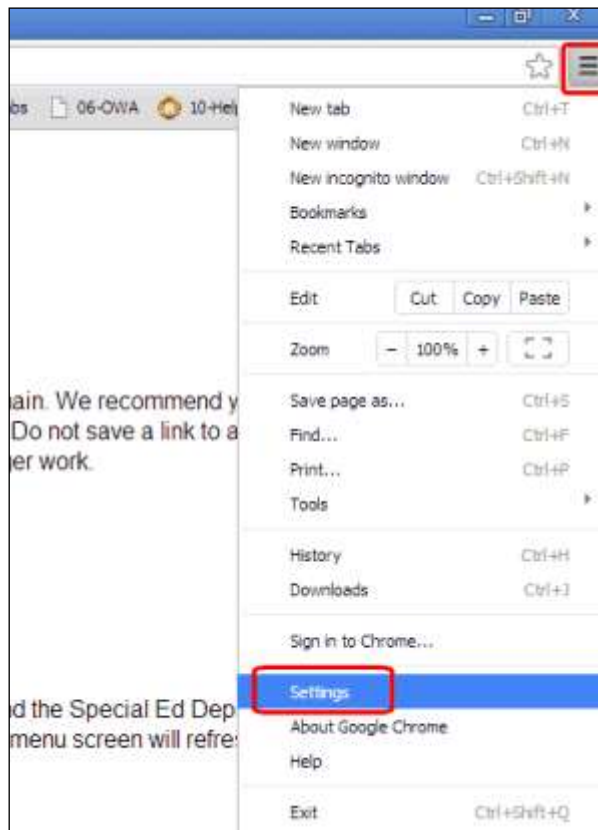


Clicking on the menu icon will open a menu. You'll see "About Google Chrome" on the menu. Click “About Google Chrome” to see what version of Chrome you are using.

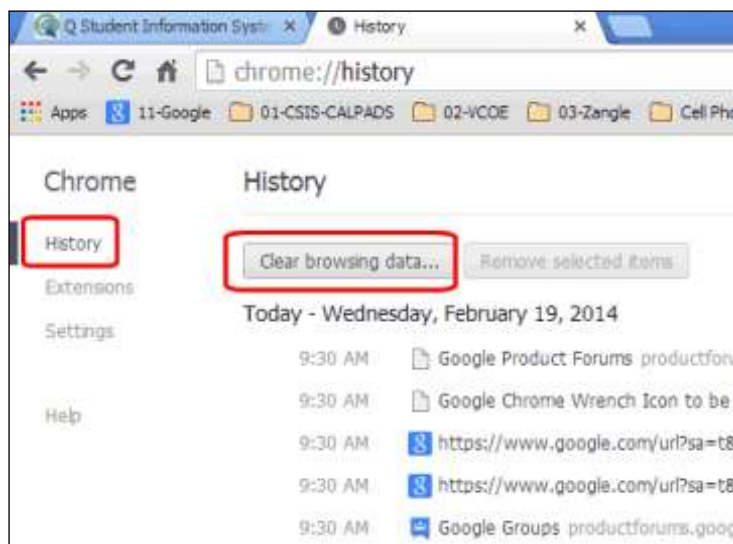


How to clear the cache in Google Chrome

Click on the menu icon. Then, click on "Settings".



Click on "History" on the left, then the [Clear browsing data...] button.



Change the drop-down at the top to read "the beginning of time". Check-mark all the boxes except the bottom two. Click [Clear browsing data].

Wait a minute or so while the files are deleted. After it's done, you can close the "Settings" tab in Chrome.



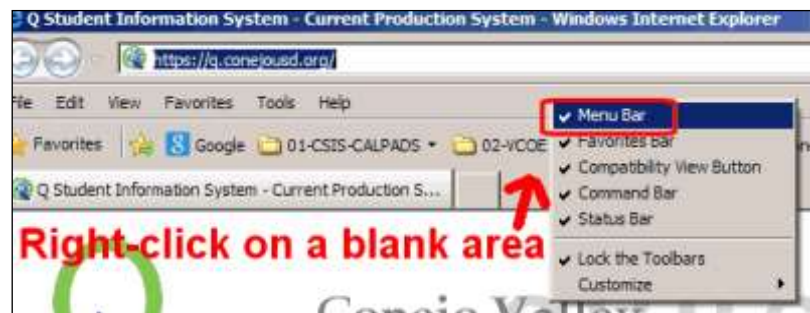
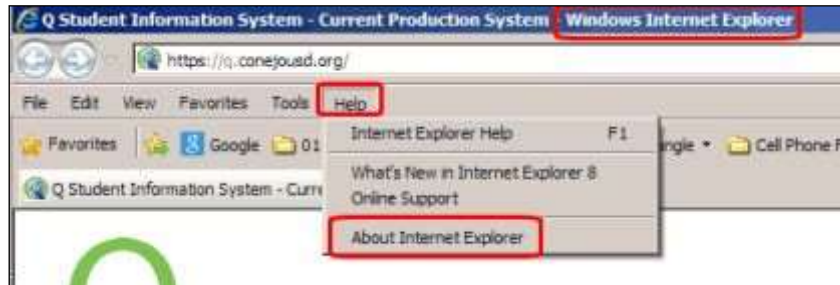
Internet Explorer

How to tell if you are using Internet Explorer (a.k.a. "IE")

If you are using Internet Explorer, it will have "Windows Internet Explorer" in the title bar of your browser. There may also be a "Help" menu and if you click on it, you'll see "About Internet Explorer".

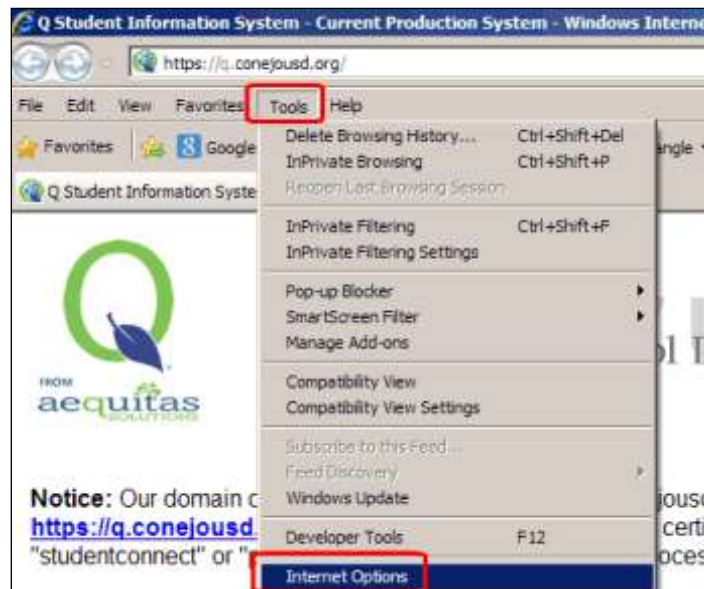
Click "About Internet Explorer" to see what version you are running.

If you don't see the menu bar with "Tools" and "Help", right-click on a blank area and click on "Menu Bar" to check-mark it.

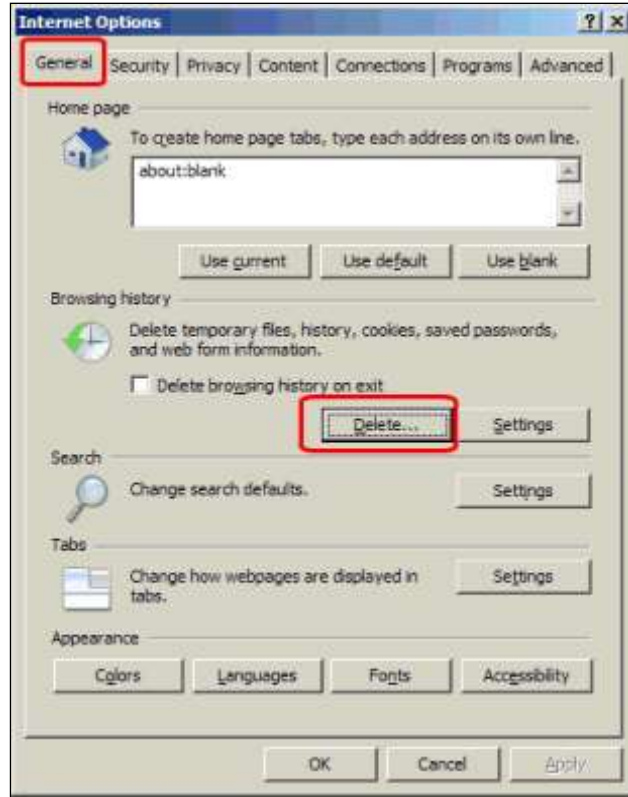


How to clear the cache in Internet Explorer

Click on the "Tools" menu and select "Internet Options".



On the "General" tab, click the [Delete...] button.



Do NOT check-mark the first box, but check-mark all the others. Then, click [Delete].
It may take a minute or so depending on how many files you have in your cache. When it finishes, click [OK] to close the box.

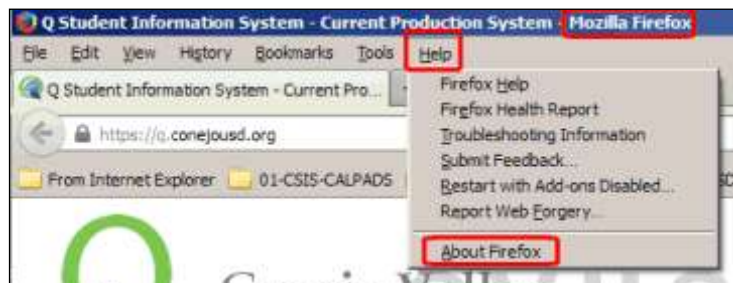


Mozilla Firefox

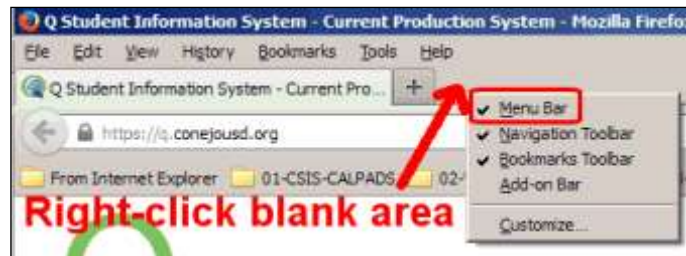
How to tell if you are using Mozilla Firefox (a.k.a. "Firefox")

If you are using Mozilla Firefox, it will have "Mozilla Firefox" in the title bar of your browser. There may also be a "Help" menu and if you click on it, you'll see "About Firefox".

Click "About Firefox" to see what version you are running.



If you don't see the menu bar with "Tools" and "Help", right-click on a blank area and click on "Menu Bar" to check-mark it.

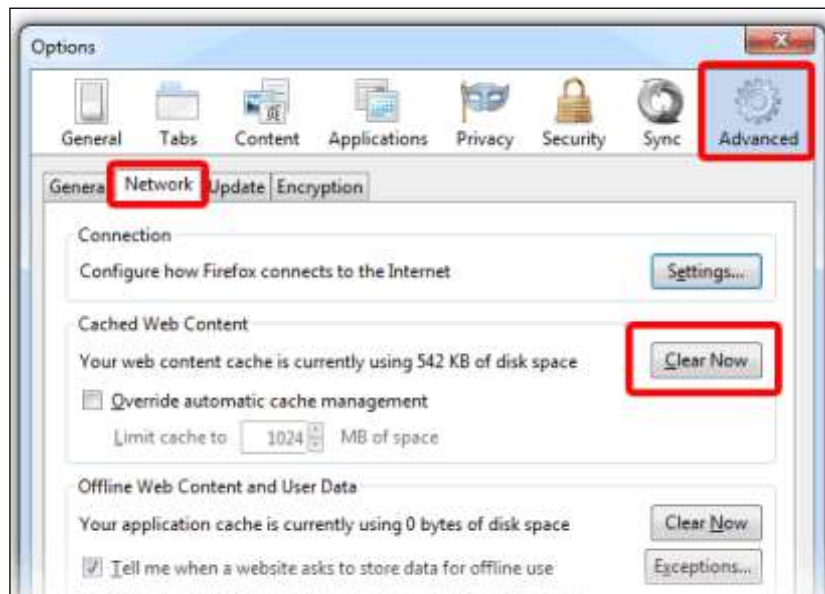


How to clear the cache in Mozilla Firefox

Click on the "Tools" menu and select "Options".



Click on the "Advanced" icon and then the "Network" tab. Click the [Clear Now] button. Wait a minute or so, then click [OK] to close the box.

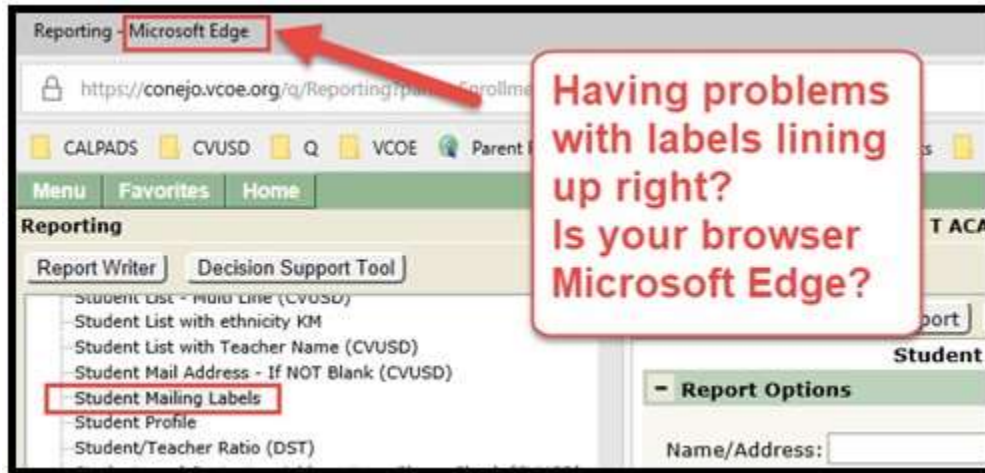


Microsoft Edge

Edge is not recommended for Q. You can run most of Q using Edge, but some reports (especially labels) will not print properly because Edge does not have a proper PDF viewer / printer.

How to tell if you are using Microsoft Edge

Look in the upper left of your Q window:

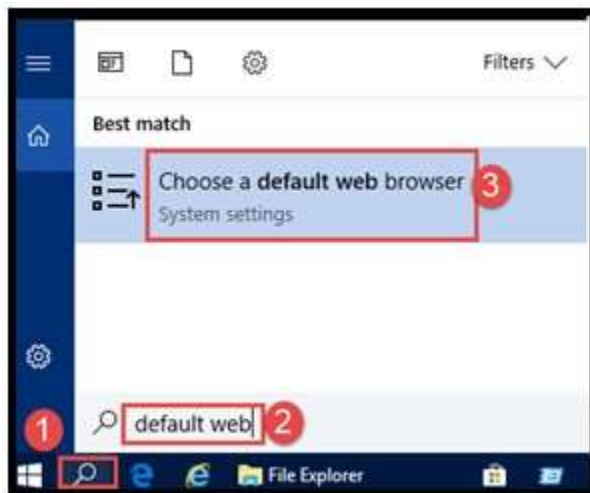


The Edge icon looks like this on your desktop or task bar:

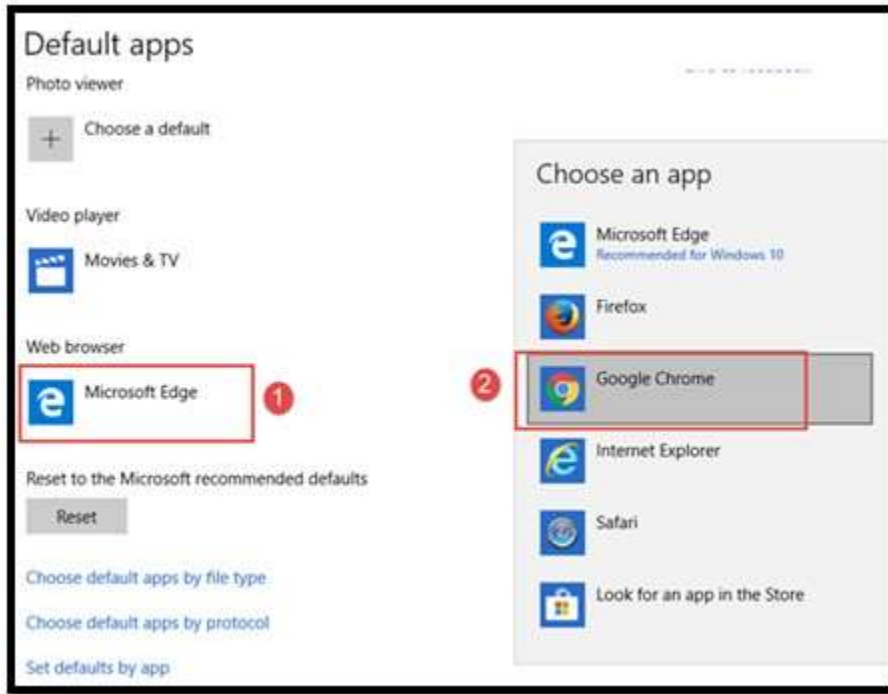
How to switch to Chrome

Log out of Q and close the Edge browser.

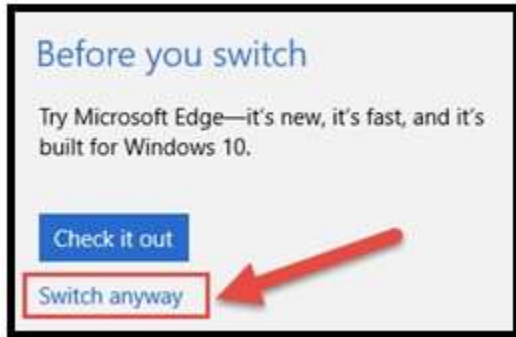
Click on the search icon at the bottom left and type “default web”. Click on “Choose a default web browser”.



Under “Web Browser”, click on “Microsoft Edge” and change it to “Google Chrome”.



If you get this box, click “Switch anyway”! (No Thank You, Microsoft! It’s not built for Q!)



If you have a Q icon on your desktop, it should now open in Chrome.

If not, you can open Chrome manually by clicking on the Chrome icon on your desktop or taskbar. Then go to <http://q.conejousd.org> and save it as a favorite.

