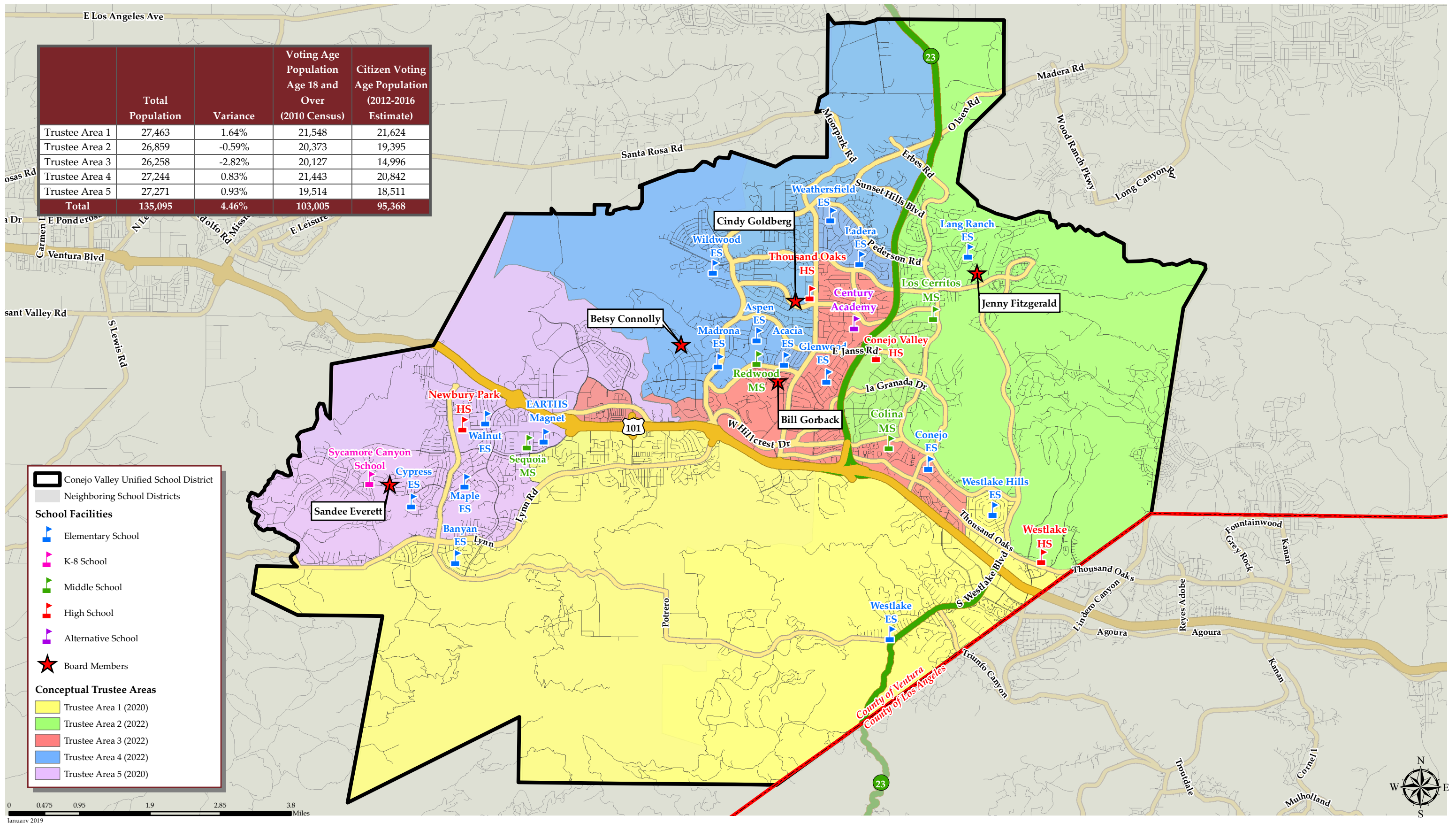


CONEJO VALLEY UNIFIED SCHOOL DISTRICT

CONCEPTUAL TRUSTEE AREAS - SCENARIO 3B

	Total Population	Variance	Voting Age Population Age 18 and Over (2010 Census)	Citizen Voting Age Population (2012-2016 Estimate)
Trustee Area 1	27,463	1.64%	21,548	21,624
Trustee Area 2	26,859	-0.59%	20,373	19,395
Trustee Area 3	26,258	-2.82%	20,127	14,996
Trustee Area 4	27,244	0.83%	21,443	20,842
Trustee Area 5	27,271	0.93%	19,514	18,511
Total	135,095	4.46%	103,005	95,368



Legend

- Conejo Valley Unified School District
- Neighboring School Districts
- School Facilities**
 - Elementary School
 - K-8 School
 - Middle School
 - High School
 - Alternative School
- Board Members
- Conceptual Trustee Areas**
 - Trustee Area 1 (2020)
 - Trustee Area 2 (2022)
 - Trustee Area 3 (2022)
 - Trustee Area 4 (2022)
 - Trustee Area 5 (2020)

0 0.475 0.95 1.9 2.85 3.8 Miles
January 2019



CONEJO VALLEY UNIFIED SCHOOL DISTRICT

CONCEPTUAL TRUSTEE AREAS - SCENARIO 3B

Total Population (2010 Census)						
	Trustee Area 1	Trustee Area 2	Trustee Area 3	Trustee Area 4	Trustee Area 5	Variance
Population	27,463	26,859	26,258	27,244	27,271	
Population Variance	444	-160	-761	225	252	4.46%
	1.64%	-0.59%	-2.82%	0.83%	0.93%	
Hispanic/Latino	2,834	2,338	10,796	3,369	3,270	
	10.32%	8.70%	41.12%	12.37%	11.99%	
White	21,621	20,879	12,467	20,973	19,425	
	78.73%	77.74%	47.48%	76.98%	71.23%	
Black/ African American	309	294	344	312	307	
	1.13%	1.09%	1.31%	1.15%	1.13%	
American Indian/ Alaska Native	45	32	70	49	49	
	0.16%	0.12%	0.27%	0.18%	0.18%	
Asian	1,823	2,594	1,967	1,717	3,253	
	6.64%	9.66%	7.49%	6.30%	11.93%	
Native Hawaiian/ Other Pacific Islander	20	13	42	34	28	
	0.07%	0.05%	0.16%	0.12%	0.10%	
Other	49	42	65	64	61	
	0.18%	0.16%	0.25%	0.23%	0.22%	
Two or More Races	762	667	507	726	878	
	2.77%	2.48%	1.93%	2.66%	3.22%	

Population 18 and Over (2010 Census)						
	Trustee Area 1	Trustee Area 2	Trustee Area 3	Trustee Area 4	Trustee Area 5	
Population	21,548	20,373	20,127	21,443	19,514	
Population Variance	947	-228	-474	842	-1,087	
	4.60%	-1.11%	-2.30%	4.09%	-5.28%	
Hispanic/Latino	1,948	1,603	7,310	2,324	2,147	
	9.04%	7.87%	36.32%	10.84%	11.00%	
White	17,454	16,199	10,503	16,950	14,354	
	81.00%	79.51%	52.18%	79.05%	73.56%	
Black/ African American	239	224	253	250	234	
	1.11%	1.10%	1.26%	1.17%	1.20%	
American Indian/ Alaska Native	35	25	52	42	35	
	0.16%	0.12%	0.26%	0.20%	0.18%	
Asian	1,438	1,983	1,612	1,409	2,331	
	6.67%	9.73%	8.01%	6.57%	11.95%	
Native Hawaiian/ Other Pacific Islander	16	11	39	31	19	
	0.07%	0.05%	0.19%	0.14%	0.10%	
Other	28	24	45	34	32	
	0.13%	0.12%	0.22%	0.16%	0.16%	
Two or More Races	390	304	313	403	362	
	1.81%	1.49%	1.56%	1.88%	1.86%	

Citizens by Voting Age Population Estimate (2012-2016)						
	Trustee Area 1	Trustee Area 2	Trustee Area 3	Trustee Area 4	Trustee Area 5	
Population	21,624	19,395	14,996	20,842	18,511	
Population Variance	2,550	321	-4,078	1,768	-563	
	13.37%	1.69%	-21.38%	9.27%	-2.95%	
Hispanic/Latino	1,973	1,494	3,494	2,363	1,958	
	9.12%	7.70%	23.30%	11.34%	10.58%	
White	17,861	15,790	10,171	16,511	13,950	
	82.60%	81.41%	67.82%	79.22%	75.36%	
Black/ African American	209	185	224	105	195	
	0.97%	0.95%	1.49%	0.50%	1.05%	
American Indian/ Alaska Native	42	0	60	14	18	
	0.19%	0.00%	0.40%	0.07%	0.10%	
Asian	1,048	1,543	820	1,362	2,174	
	4.85%	7.96%	5.47%	6.53%	11.74%	
Native Hawaiian/ Other Pacific Islander	30	0	0	49	20	
	0.14%	0.00%	0.00%	0.24%	0.11%	
Other	0	0	0	0	0	
	0.00%	0.00%	0.00%	0.00%	0.00%	
Two or More Races	461	383	227	438	196	
	2.13%	1.97%	1.51%	2.10%	1.06%	

ACS Profile Income by Household (2017 Estimates) ^[1]						
	Trustee Area 1	Trustee Area 2	Trustee Area 3	Trustee Area 4	Trustee Area 5	
Income \$0-25k	8.00%	4.76%	19.66%	8.02%	9.12%	
Income \$25-50k	11.84%	7.79%	20.51%	9.37%	14.11%	
Income \$50-75k	12.10%	9.44%	16.86%	12.14%	9.79%	
Income \$75-200k	43.30%	48.22%	35.55%	52.58%	44.38%	
Income \$200k+	24.76%	29.78%	7.43%	17.89%	22.60%	
Total	100.00%	100.00%	100.00%	100.00%	100.00%	

[1] Based off estimates prepared by the Census Bureau