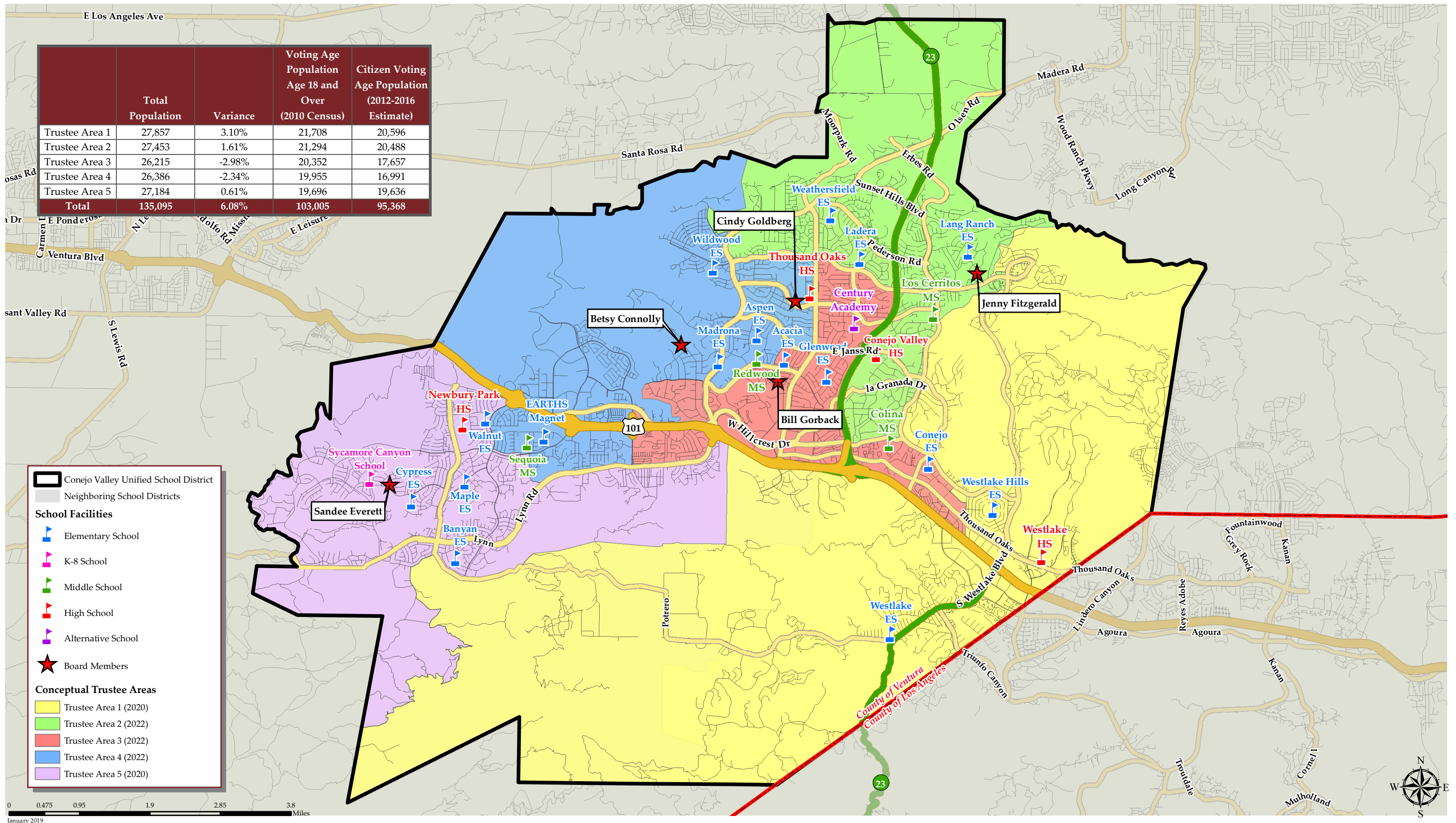


# CONEJO VALLEY UNIFIED SCHOOL DISTRICT

# CONCEPTUAL TRUSTEE AREAS - SCENARIO 3A

	Total Population	Variance	Voting Age Population Age 18 and Over (2010 Census)	Citizen Voting Age Population (2012-2016 Estimate)
Trustee Area 1	27,857	3.10%	21,708	20,596
Trustee Area 2	27,453	1.61%	21,294	20,488
Trustee Area 3	26,215	-2.98%	20,352	17,657
Trustee Area 4	26,386	-2.34%	19,955	16,991
Trustee Area 5	27,184	0.61%	19,696	19,636
<b>Total</b>	<b>135,095</b>	<b>6.08%</b>	<b>103,005</b>	<b>95,368</b>



**Legend**

- Conejo Valley Unified School District
- Neighboring School Districts
- School Facilities**
  - Elementary School
  - K-8 School
  - Middle School
  - High School
  - Alternative School
- Board Members
- Conceptual Trustee Areas**
  - Trustee Area 1 (2020)
  - Trustee Area 2 (2022)
  - Trustee Area 3 (2022)
  - Trustee Area 4 (2022)
  - Trustee Area 5 (2020)

0 0.475 0.95 1.9 2.85 3.8 Miles  
January 2019



# CONEJO VALLEY UNIFIED SCHOOL DISTRICT

## CONCEPTUAL TRUSTEE AREAS - SCENARIO 3A

Total Population (2010 Census)						
	Trustee Area 1	Trustee Area 2	Trustee Area 3	Trustee Area 4	Trustee Area 5	Variance
Population	27,857	27,453	26,215	26,386	27,184	
Population Variance	838	434	-804	-633	165	6.08%
	3.10%	1.61%	-2.98%	-2.34%	0.61%	
Hispanic/Latino	2,129	3,589	8,635	5,349	2,905	
	7.64%	13.07%	32.94%	20.27%	10.69%	
White	22,140	20,654	14,923	17,075	20,573	
	79.48%	75.23%	56.93%	64.71%	75.68%	
Black/ African American	274	350	348	302	292	
	0.98%	1.27%	1.33%	1.14%	1.07%	
American Indian/ Alaska Native	33	44	68	49	51	
	0.12%	0.16%	0.26%	0.19%	0.19%	
Asian	2,485	2,011	1,619	2,812	2,427	
	8.92%	7.33%	6.18%	10.66%	8.93%	
Native Hawaiian/ Other Pacific Islander	17	33	39	29	19	
	0.06%	0.12%	0.15%	0.11%	0.07%	
Other	43	60	57	60	61	
	0.15%	0.22%	0.22%	0.23%	0.22%	
Two or More Races	736	712	526	710	856	
	2.64%	2.59%	2.01%	2.69%	3.15%	

Population 18 and Over (2010 Census)						
	Trustee Area 1	Trustee Area 2	Trustee Area 3	Trustee Area 4	Trustee Area 5	
Population	21,708	21,294	20,352	19,955	19,696	
Population Variance	1,107	693	-249	-646	-905	
	5.37%	3.36%	-1.21%	-3.14%	-4.39%	
Hispanic/Latino	1,505	2,450	5,862	3,619	1,896	
	6.93%	11.51%	28.80%	18.14%	9.63%	
White	17,672	16,486	12,476	13,481	15,345	
	81.41%	77.42%	61.30%	67.56%	77.91%	
Black/ African American	211	279	259	230	221	
	0.97%	1.31%	1.27%	1.15%	1.12%	
American Indian/ Alaska Native	24	38	55	35	37	
	0.11%	0.18%	0.27%	0.18%	0.19%	
Asian	1,903	1,601	1,318	2,175	1,776	
	8.77%	7.52%	6.48%	10.90%	9.02%	
Native Hawaiian/ Other Pacific Islander	13	29	36	22	16	
	0.06%	0.14%	0.18%	0.11%	0.08%	
Other	26	33	38	35	31	
	0.12%	0.15%	0.19%	0.18%	0.16%	
Two or More Races	354	378	308	358	374	
	1.63%	1.78%	1.51%	1.79%	1.90%	

Citizens by Voting Age Population Estimate (2012-2016)						
	Trustee Area 1	Trustee Area 2	Trustee Area 3	Trustee Area 4	Trustee Area 5	
Population	20,596	20,488	17,657	16,991	19,636	
Population Variance	1,522	1,414	-1,417	-2,083	562	
	7.98%	7.42%	-7.43%	-10.92%	2.95%	
Hispanic/Latino	1,516	2,265	3,791	1,889	1,821	
	7.36%	11.06%	21.47%	11.12%	9.27%	
White	17,177	16,020	12,241	13,121	15,724	
	83.40%	78.19%	69.33%	77.22%	80.08%	
Black/ African American	196	175	273	168	106	
	0.95%	0.85%	1.55%	0.99%	0.54%	
American Indian/ Alaska Native	35	14	60	0	25	
	0.17%	0.07%	0.34%	0.00%	0.13%	
Asian	1,432	1,316	911	1,582	1,706	
	6.95%	6.42%	5.16%	9.31%	8.69%	
Native Hawaiian/ Other Pacific Islander	0	49	10	18	22	
	0.00%	0.24%	0.06%	0.11%	0.11%	
Other	0	0	0	0	0	
	0.00%	0.00%	0.00%	0.00%	0.00%	
Two or More Races	240	649	371	213	232	
	1.17%	3.17%	2.10%	1.25%	1.18%	

ACS Profile Income by Household (2017 Estimates) <sup>[1]</sup>						
	Trustee Area 1	Trustee Area 2	Trustee Area 3	Trustee Area 4	Trustee Area 5	
Income \$0-25k	7.49%	7.10%	20.09%	6.61%	8.40%	
Income \$25-50k	9.81%	8.87%	18.90%	12.90%	13.46%	
Income \$50-75k	11.83%	11.08%	16.27%	12.19%	9.35%	
Income \$75-200k	43.21%	51.53%	35.73%	49.33%	44.01%	
Income \$200k+	27.66%	21.42%	9.01%	18.97%	24.79%	
Total	100.00%	100.00%	100.00%	100.00%	100.00%	

[1] Based off estimates prepared by the Census Bureau